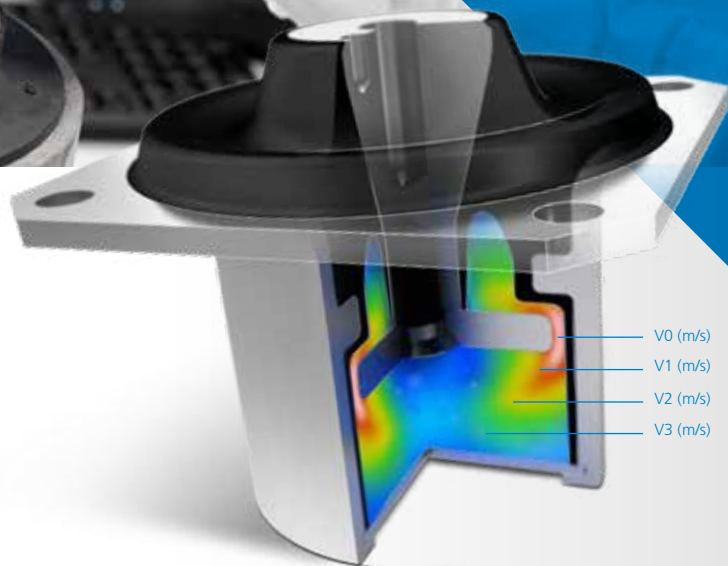


ANTI-VIBRATION MOUNTS AMC MECANOCAUCHO®



AMC MECANOCAUCHO® BOBBINS

DESCRIPTION

The AMC MECANOCAUCHO® Bobbins are devices for making elastic anchorings or fixings. They can be used in a wide variety of applications, particularly for elastic suspensions and antivibration isolation of machines and different mechanical organs.

They are made of a block of rubber with two parallel metal parts at the end which enable it to be fixed either by screws in the "C" model or with nuts in the "A" model or a combination of both in the "B" model.

The rubber block may be cylindrical in cases requiring greater load capacity or as a diabolo when greater elasticity is required in all directions.

OPERATION AND ASSEMBLY

Its elasticity is much greater in all the directions parallel to the armatures than in the perpendicular direction. The rubber works based on compression or shear depending on the direction it is placed at installation time. This direction is made according to the use and the objective.

It is therefore installed with nuts or screws depending on the model chosen, with one part attached to the fixed chassis and the other to the machine to be suspended.

TECHNICAL CHARACTERISTICS

Depending on the size of the rubber block, the AMC MECANOCAUCHO® bobbing has more or less elasticity, which is greater particularly in all directions perpendicular to its axis (shear).

The AMC MECANOCAUCHO® bobbing thus makes it possible to make joints which permit major relative movements, up to several millimetres (in the case of heat expansion, chassis deformations, etc.).

The AMC MECANOCAUCHO® bobbing serves very well for the vibration isolation of machines where the vibrations are perpendicular to their axis, unless these stresses are too much when applied in this direction.

ADVANTAGES

- Easy to install.
- High elasticity (particularly transversal).
- Economical.

APPLICATIONS

The AMC MECANOCAUCHO® bobbins are particularly suitable for installation on small motor-pumps, motor-ventilators, driers, sieves, compactors, washing machines, electrical motors, on-board control panels, measuring apparatuses, control cabinets, microphones, fluorescent tubes, etc.



AMC MECANOCAUCHO® BOBBINS TYPE A

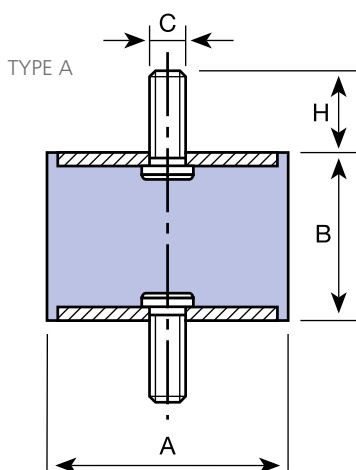
OPERATION AND ASSEMBLY

Their elasticity is much greater in all the directions parallel to the armatures than in the perpendicular direction. The rubber works based on compression or shear depending on the direction it is placed in at installation time. This direction is made according to the use and the objective.

It is therefore installed with nuts or screws depending on the model chosen, with one part attached to the fixed chassis and the other to the machine to be suspended.

APPLICATIONS

The AMC MECANOCAUCHO® bobbins are particularly suitable for installation on small motor-pumps, motor-ventilators, driers, sieves, compactors, washing machines, electrical motors, on-board control panels, measuring apparatuses, control cabinets, microphones, fluorescent tubes, etc.



Type	Code	A (mm)	B (mm)	C (mm)	H (mm)	Weight (kg)	COMPRESSION LOAD Max. daN	COMPRESSION DEFLECT. mm	SHEAR LOAD Max. daN	SHEAR DEFLECT. mm
BOBBINS TYPE A 12-25	120001	12,5	10	M-5	10	0,006	12	2	1,5	1,5
	120002	12,5	15	M-5	10	0,007	10	3	1,5	2
	120003	12,5	20	M-5	10	0,008	8	3,5	1,5	4
	120011	16	10	M-5	12	0,01	20	1,5	2,5	1,5
	120012	16	15	M-5	12	0,011	20	3	2,5	2
	120013	16	20	M-5	12	0,012	15	4	2,5	4
	120014	16	25	M-5	12	0,013	15	5	2	5
	120021	20	8,5	M-6	16,5	0,016	40	1,5	5	1
	120022	20	15	M-6	16,5	0,018	35	4	5	2,5
	120023	20	20	M-6	16,5	0,019	30	5	5	3,5
	120024	20	25	M-6	16,5	0,02	30	5,5	4,5	4,5
	120025	20	30	M-6	16,5	0,022	25	7	4,5	4,5
	120171	25,5	10	M-6	18	0,032	80	2	8	1,5
	120172	25,5	15	M-6	18	0,032	60	3,5	8	2,5
	120173	25,5	20	M-6	18	0,039	55	4,5	8	3,5
	120174	25,5	25	M-6	18	0,041	50	6	8	4,5
120175	25,5	30	M-6	18	0,043	50	8	8	6	
120026	25,5	10	M-8	20	0,034	80	2	8	1,5	
120031	25,5	15	M-8	20	0,04	60	3,5	8	2,5	
120032	25,5	19	M-8	20	0,04	55	4,5	8	3,5	
120033	25,5	22	M-8	20	0,042	50	5,5	8	4	
120034	25,5	25	M-8	20	0,043	50	6	8	4,5	
120035	25,5	30	M-8	20	0,046	50	8	8	6	
120036	25,5	40	M-8	20	0,053	50	10	10	6	
BOBBINS TYPE A 30-50	120041	30	15	M-8	20	0,049	90	3	11	2,5
	120042	30	22	M-8	20	0,053	80	5	11	4
	120186	30	25	M-8	20	0,056	75	6,5	11	5
	120043	30	30	M-8	20	0,059	70	8	11	6
	120044	30	40	M-8	20	0,066	60	9	11	7,7
	120193	40	20	M-8	20	0,086	160	5	20	3
	120194	40	25	M-8	20	0,1	150	6	20	3,5
	120195	40	28	M-8	20	0,106	150	6	20	5,5
	120196	40	30	M-8	20	0,113	150	6	30	5,5
	120197	40	35	M-8	20	0,117	120	8	20	6,5
	120198	40	40	M-8	20	0,123	120	10	20	7,5
	120199	40	45	M-8	20	0,134	120	11	20	9
	120051	40	20	M-10	25	0,1	160	5	20	3
	120191	40	25	M-10	25	0,104	150	6	20	3,5
	120052	40	28	M-10	25	0,111	150	6	20	5,5
	120192	40	30	M-10	25	0,117	150	6	30	5,5
	120053	40	35	M-10	25	0,121	120	8	20	6,5
	120054	40	40	M-10	25	0,128	120	10	20	7,5
	120055	40	45	M-10	25	0,137	120	11	20	9
	120201	50	20	M-10	25	0,128	300	5	25	3,5
120061	50	25	M-10	25	0,132	300	6	25	4,5	
120202	50	30	M-10	25	0,148	275	7	25	6,5	
120062	50	35	M-10	25	0,153	250	8	25	7	
120203	50	40	M-10	25	0,169	210	10	25	8	
120063	50	45	M-10	25	0,179	190	11	25	9	
120204	50	50	M-10	25	0,199	170	11	25	10,5	
120064	50	60	M-10	25	0,21	150	11	25	12	
BOBBINS TYPE A 60-95	120071	60	25	M-10	25	0,207	400	6	30	4,5
	120072	60	36	M-10	25	0,241	300	9	30	7
	120073	60	45	M-10	25	0,269	250	11	30	9
	120074	60	60	M-10	25	0,315	200	12	30	10
	120081	70	35	M-10	25	0,322	450	8	35	6,5
	120082	70	50	M-10	25	0,38	350	11	35	11
	120083	70	60	M-10	25	0,423	300	12	35	13
	120084	70	70	M-10	25	0,485	300	14	35	15
	120091	75	25	M-12	30	0,32	650	7	37	5
	120092	75	40	M-12	30	0,402	500	9	37	7
	120093	75	45	M-12	30	0,423	500	10	37	9
	120094	75	55	M-12	30	0,468	450	11	37	11
	120101	80	30	M-14	35	0,503	950	7	40	5
	120102	80	40	M-14	35	0,561	600	9	40	7
120103	80	50	M-14	35	0,606	550	10	40	8	
120104	80	55	M-14	35	0,571	550	11	40	9	
120105	80	70	M-14	35	0,71	500	13	40	15	
120106	80	75	M-14	35	0,737	450	14	40	16	
120111	95	40	M-16	45	0,803	1200	8	60	7	
120112	95	55	M-16	45	0,932	1000	11	60	8	
120113	95	60	M-16	45	0,971	800	12	60	10	
120114	95	75	M-16	45	1,148	700	13	60	14	
BOBBINS TYPE A 105-150	120121	105	50	M-16	45	1	1200	9	80	9
	120122	105	75	M-16	45	1,283	1000	13	80	14
	120123	105	100	M-16	45	1,493	800	16	80	16
	120131	120	50	M-16	45	1,153	1500	9	100	9
	120132	120	75	M-16	45	1,568	1200	13	100	14
	120133	120	100	M-16	45	1,903	1000	16	100	16
	120142	130	50	M-16	45	1,658	1600	9	120	9
	120143	130	75	M-16	45	2,105	1450	13	120	14
	120144	130	100	M-16	45	2,492	1200	16	120	16
	120151	150	50	M-20	50	2,268	1800	9	140	9
	120152	150	75	M-20	50	2,808	1650	13	140	14
120153	150	100	M-20	50	3,356	1400	16	140	16	

AMC MECANOCAUCHO® BOBBINS TYPE B

OPERATION AND INSTALLATION

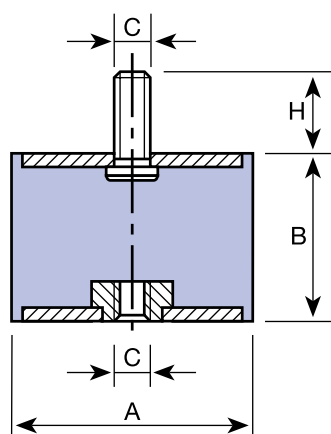
Their elasticity is much greater in all the directions parallel to the armatures than in the perpendicular direction. The rubber works based on compression or shear depending on the direction it is placed in at installation time. This direction is made according to the use and the objective.

It is therefore installed with nuts or screws depending on the model chosen, with one part attached to the fixed chassis and the other to the machine to be suspended.

APPLICATIONS

The AMC MECANOCAUCHO® bobbins are particularly suitable for installation on small motor-pumps, motor-ventilators, driers, sieves, compactors, washing machines, electrical motors, on-board control panels, measuring apparatuses, control cabinets, microphones, fluorescent tubes, etc.

TYPE B



Type	Code	A (mm)	B (mm)	C (mm)	H (mm)	Weight (kg)	COMPRESSION LOAD Max. daN	COMPRESSION DEFLECT. mm	SHEAR LOAD Max. daN	SHEAR DEFLECT. mm
BOBBINS TYPE B 12-25	121001	12,5	10	M-5	10	0,005	12	2	1,5	1,5
	121002	12,5	15	M-5	10	0,006	10	3	1,5	2
	121003	12,5	20	M-5	10	0,007	8	3,5	1,5	4
	121011	16	10	M-5	12	0,008	20	1,5	2,5	1,5
	121012	16	15	M-5	12	0,01	20	3	2,5	2
	121013	16	20	M-5	12	0,011	15	4	2,5	4
	121014	16	25	M-5	12	0,012	15	5	2	5
	121022	20	15	M-6	16,5	0,017	35	4	5	2,5
	121023	20	20	M-6	16,5	0,018	30	5	5	3,5
	121024	20	25	M-6	16,5	0,02	30	5,5	4,5	4,5
	121025	20	30	M-6	16,5	0,021	25	7	4,5	4,5
	121172	25,5	15	M-6	18	0,033	60	3,5	8	2,5
	121173	25,5	20	M-6	18	0,034	55	4,5	8	3,5
	121174	25,5	25	M-6	18	0,037	50	6	8	4,5
	121175	25,5	30	M-6	18	0,038	50	8	8	6
	121031	25,5	15	M-8	20	0,036	60	3,5	8	2,5
121032	25,5	19	M-8	20	0,037	55	4,5	8	3,5	
121033	25,5	22	M-8	20	0,038	50	5,5	8	4	
121034	25,5	25	M-8	20	0,039	50	6	8	4,5	
121035	25,5	30	M-8	20	0,041	50	8	8	6	
121036	25,5	40	M-8	20	0,046	50	10	10	6	
BOBBINS TYPE B 30-40	121041	30	15	M-8	20	0,047	90	3	11	2,5
	121042	30	22	M-8	20	0,049	80	5	11	4
	121186	30	25	M-8	20	0,053	75	6,5	11	5
	121043	30	30	M-8	20	0,056	70	8	11	6
	121044	30	40	M-8	20	0,062	60	9	11	7,5
	121193	40	20	M-8	20	0,078	160	5	20	3
	121194	40	25	M-8	20	0,095	150	6	20	3,5
	121195	40	28	M-8	20	0,098	150	6	20	5,5
	121196	40	30	M-8	20	0,101	150	6	30	5,5
	121197	40	35	M-8	20	0,102	120	8	20	6,5
	121198	40	40	M-8	20	0,105	120	10	20	7,5
	121199	40	45	M-8	20	0,12	120	11	20	9
	121051	40	20	M-10	25	0,09	160	5	20	3
	121191	40	25	M-10	25	0,099	150	6	20	3,5
	121052	40	28	M-10	25	0,103	150	6	20	5,5
	121192	40	30	M-10	25	0,103	150	6	30	5,5
121053	40	35	M-10	25	0,105	120	8	20	6,5	
121054	40	40	M-10	25	0,109	120	10	20	7,5	
121055	40	45	M-10	25	0,125	120	11	20	9	
BOBBINS TYPE B 50-75	121201	50	20	M-10	25	0,124	300	5	25	3,5
	121061	50	25	M-10	25	0,128	300	6	25	4,5
	121202	50	30	M-10	25	0,141	275	7	25	6,5
	121062	50	35	M-10	25	0,151	250	8	25	7
	121203	50	40	M-10	25	0,162	210	10	25	8
	121063	50	45	M-10	25	0,173	190	11	25	9
	121204	50	50	M-10	25	0,192	170	11	25	10,5
	121064	50	60	M-10	25	0,202	150	11	25	12
	121071	60	25	M-10	25	0,204	400	6	30	4,5
	121072	60	36	M-10	25	0,238	300	9	30	7
	121073	60	45	M-10	25	0,264	250	11	30	9
	121074	60	60	M-10	25	0,311	200	12	30	10
	121081	70	35	M-10	25	0,311	450	8	35	6,5
	121082	70	50	M-10	25	0,371	350	11	35	11
	121083	70	60	M-10	25	0,416	300	12	35	13
	121084	70	70	M-10	25	0,479	300	14	35	15
121091	75	25	M-12	30	0,301	650	7	37	5	
121092	75	40	M-12	30	0,384	500	9	37	7	
121093	75	45	M-12	30	0,411	500	10	37	9	
121094	75	55	M-12	30	0,455	450	11	37	11	
BOBBINS TYPE B 80-150	121101	80	30	M-14	35	0,445	950	7	40	5
	121102	80	40	M-14	35	0,505	600	9	40	7
	121103	80	50	M-14	35	0,521	550	10	40	8
	121104	80	55	M-14	35	0,544	550	11	40	9
	121105	80	70	M-14	35	0,648	500	13	40	15
	121106	80	75	M-14	35	0,687	450	14	40	16
	121111	95	40	M-16	45	0,769	1200	8	60	7
	121112	95	55	M-16	45	0,88	1000	11	60	8
	121113	95	60	M-16	45	0,888	800	12	60	10
	121114	95	75	M-16	45	1,087	700	13	60	14
	121121	105	50	M-16	45	0,927	1200	9	80	9
	121122	105	75	M-16	45	1,208	1000	13	80	14
	121123	105	100	M-16	45	1,422	800	16	80	16
	121131	120	50	M-16	45	1,078	1500	9	100	9
	121132	120	75	M-16	45	1,407	1200	13	100	14
	121133	120	100	M-16	45	1,834	1000	16	100	16
121142	130	50	M-16	45	1,591	1600	9	120	9	
121143	130	75	M-16	45	2,039	1450	13	120	14	
121144	130	100	M-16	45	2,426	1200	16	120	16	
121151	150	50	M-20	50	3,301	1800	9	140	9	
121152	150	75	M-20	50	4,001	1650	13	140	14	
121153	150	100	M-20	50	-	1400	16	140	16	

AMC MECANOCAUCHO® BOBBINS TYPE C

OPERATION AND INSTALLATION

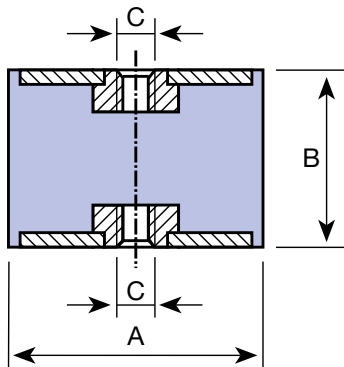
Their elasticity is much greater in all the directions parallel to the armatures than in the perpendicular direction. The rubber works based on compression or shear depending on the direction it is placed in at installation time. This direction is made according to the use and the objective.

It is therefore installed with nuts or screws depending on the model chosen, with one part attached to the fixed chassis and the other to the machine to be suspended.

APPLICATIONS

The AMC MECANOCAUCHO® bobbins are particularly suitable for installation on small motor-pumps, motor-ventilators, driers, sieves, compactors, washing machines, electrical motors, on-board control panels, measuring apparatuses, control cabinets, microphones, fluorescent tubes, etc.

TYPE C



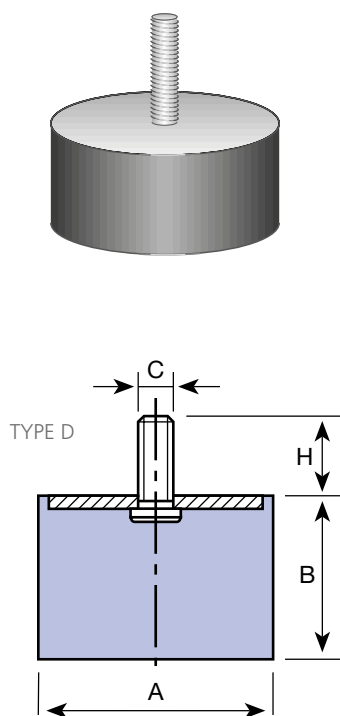
Type	Code	A (mm)	B (mm)	C (mm)	Weight (kg)	COMPRESSION LOAD Max. daN	COMPRESSION DE- FLECT. mm	SHEAR LOAD Max. daN	SHEAR DEFLECT. mm
BOBBINS TYPE C 12-30	122003	12,5	20	M-5	0,007	8	3,5	1,5	4
	122013	16	20	M-5	0,01	15	4	2,5	4
	122014	16	25	M-5	0,012	15	5	2	5
	122023	20	20	M-6	0,017	30	5	5	3,5
	122024	20	25	M-6	0,018	30	5,5	4,5	4,5
	122025	20	30	M-6	0,019	25	7	4,5	4,5
	122173	25,5	20	M-6	0,03	55	4,5	8	3,5
	122174	25,5	25	M-6	0,035	50	6	8	4,5
	122175	25,5	30	M-6	0,036	50	8	8	6
	122032	25,5	19	M-8	0,031	55	4,5	8	3,5
	122033	25,5	22	M-8	0,038	50	5,5	8	4
	122034	25,5	25	M-8	0,037	50	6	8	4,5
	122035	25,5	30	M-8	0,038	50	8	8	6
	122036	25,5	40	M-8	0,044	50	10	10	6
122042	30	22	M-8	0,045	80	5	11	4	
122186	30	25	M-8	0,048	75	6,5	11	5	
122043	30	30	M-8	0,052	70	8	11	6	
122044	30	40	M-8	0,061	60	9	11	7,5	
BOBBINS TYPE C 40-60	122194	40	25	M-8	0,089	150	6	20	3,5
	122195	40	28	M-8	0,097	150	6	20	5,5
	122196	40	30	M-8	0,097	150	6	30	5,5
	122197	40	35	M-8	0,099	120	8	20	6,5
	122198	40	40	M-8	0,106	120	10	20	7,5
	122199	40	45	M-8	0,111	120	11	20	9
	122052	40	28	M-10	0,094	150	6	20	5,5
	122192	40	30	M-10	0,099	150	6	30	5,5
	122053	40	35	M-10	0,102	120	8	20	6,5
	122054	40	40	M-10	0,109	120	10	20	7,5
	122055	40	45	M-10	0,114	120	11	20	9
	122061	50	25	M-10	0,117	300	6	25	4,5
	122202	50	30	M-10	0,134	275	7	25	6,5
	122062	50	35	M-10	0,146	250	8	25	7
	122203	50	40	M-10	0,161	210	10	25	8
	122063	50	45	M-10	0,171	190	11	25	9
	122204	50	50	M-10	0,185	170	11	25	10,5
	122064	50	60	M-10	0,199	150	11	25	12
122071	60	25	M-10	0,194	400	6	30	4,5	
122072	60	36	M-10	0,234	300	9	30	7	
122073	60	45	M-10	0,255	250	11	30	9	
122074	60	60	M-10	0,304	200	12	30	10	
122081	70	35	M-10	0,307	450	8	35	6,5	
122082	70	50	M-10	0,376	350	11	35	11	
122083	70	60	M-10	0,41	300	12	35	13	
122084	70	70	M-10	0,469	300	14	35	15	
122092	75	40	M-12	0,351	500	9	37	7	
122093	75	45	M-12	0,395	500	10	37	9	
122094	75	55	M-12	0,436	450	11	37	11	
122101	80	30	M-14	0,391	950	7	40	5	
122102	80	40	M-14	0,449	600	9	40	7	
122103	80	50	M-14	0,492	550	10	40	8	
122104	80	55	M-14	0,516	550	11	40	9	
122105	80	70	M-14	0,602	500	13	40	15	
122106	80	75	M-14	0,63	450	14	40	16	
122111	95	40	M-16	0,714	1.200	8	60	7	
122112	95	55	M-16	0,851	1.000	11	60	8	
122113	95	60	M-16	0,88	800	12	60	10	
122114	95	75	M-16	1,026	700	13	60	14	
122122	105	50	M-16	0,714	1.200	9	80	9	
122123	105	75	M-16	1,158	1.000	13	80	14	
122124	105	100	M-16	1,405	800	16	80	16	
122131	120	50	M-16	1,108	1.500	9	100	9	
122132	120	75	M-16	1,366	1.200	13	100	14	
122133	120	100	M-16	1,702	1.000	16	100	16	
122142	130	50	M-16	2,125	1.600	9	120	9	
122143	130	75	M-16	1,962	1.450	13	120	14	
122144	130	100	M-16	2,356	1.200	16	120	16	
122151	150	50	M-20	2,024	1.800	9	140	9	
122152	150	75	M-20	2,558	1.650	13	140	14	
122153	150	100	M-20	2,996	1.400	16	140	16	

SIMPLE BUFFERS AMC MECANOCAUCHO® TYPE D

APPLICATIONS

As buffers: In any case for limiting a flexible element.

- End of stroke of spring or damper.
- End of stroke of cranes and hoists.
- Setting of fragile material in packings.



Type	Code	A (mm)	B (mm)	C (mm)	H (mm)	Weight (kg)	COMPRESSION LOAD Max. daN	COMPRESSION DEFLECT. mm
SIMPLE BUFFERS AMC 12-25	110001	12,5	10	M-5	10	0,004	12	2
	110002	12,5	15	M-5	10	0,004	10	3
	110003	12,5	20	M-5	10	0,005	8	3,5
	110004	16	10	M-5	12	0,006	20	1,5
	110005	16	15	M-5	12	0,008	20	3
	110006	16	20	M-5	12	0,008	15	4
	110007	16	25	M-5	12	0,009	15	5
	110008	20	8,5	M-6	16,5	0,009	40	1,5
	110009	20	15	M-6	16,5	0,012	35	4
	110010	20	20	M-6	16,5	0,012	30	5
	110011	20	25	M-6	16,5	0,015	30	5,5
	110012	20	30	M-6	16,5	0,017	25	7
	110091	25,5	10	M-6	18	0,02	80	2
	110092	25,5	15	M-6	18	0,021	60	3,5
	110093	25,5	20	M-6	18	0,022	55	4,5
	110094	25,5	25	M-6	18	0,025	50	6
	110095	25,5	30	M-6	18	0,028	50	8
	110013	25,5	10	M-8	20	0,022	80	2
	110014	25,5	15	M-8	20	0,024	60	3,5
110015	25,5	19	M-8	20	0,025	55	4,5	
110016	25,5	22	M-8	20	0,027	50	5,5	
110017	25,5	25	M-8	20	0,028	50	6	
110018	25,5	30	M-8	20	0,032	50	8	
110019	25,5	40	M-8	20	0,036	50	10	
SIMPLE BUFFERS AMC 30-50	110020	30	15	M-8	20	0,03	90	3
	110021	30	22	M-8	20	0,034	80	5
	110101	30	25	M-8	20	0,037	75	6,5
	110022	30	30	M-8	20	0,041	70	8
	110023	30	40	M-8	20	0,05	60	9
	110112	40	20	M-8	20	0,06	160	5
	110113	40	25	M-8	20	0,068	150	6
	110114	40	28	M-8	20	0,072	150	6
	110115	40	30	M-8	20	0,08	150	6
	110116	40	35	M-8	20	0,082	120	8
	110117	40	40	M-8	20	0,087	120	10
	110118	40	45	M-8	20	0,089	120	11
	110024	40	20	M-10	25	0,064	160	5
	110110	40	25	M-10	25	0,07	150	6
	110025	40	28	M-10	25	0,076	150	6
	110111	40	30	M-10	25	0,07	150	6
	110026	40	35	M-10	25	0,086	120	8
	110027	40	40	M-10	25	0,092	120	10
	110028	40	45	M-10	25	0,094	120	11
	110121	50	20	M-10	25	0,09	300	5
110029	50	25	M-10	25	0,093	300	6	
110122	50	30	M-10	25	0,104	275	7	
110030	50	35	M-10	25	0,114	250	8	
110123	50	40	M-10	25	0,125	210	10	
110031	50	45	M-10	25	0,138	190	11	
110124	50	50	M-10	25	0,144	170	11	
110032	50	60	M-10	25	0,17	150	11	
SIMPLE BUFFERS AMC 60-95	110033	60	25	M-10	25	0,145	400	6
	110034	60	36	M-10	25	0,177	300	9
	110035	60	45	M-10	25	0,206	250	11
	110036	60	60	M-10	25	0,251	200	12
	110037	70	35	M-10	25	0,236	450	8
	110038	70	50	M-10	25	0,294	350	11
	110039	70	60	M-10	25	0,336	300	12
	110040	70	70	M-10	25	0,397	300	14
	110041	75	25	M-12	30	0,222	650	7
	110042	75	40	M-12	30	0,302	500	9
	110043	75	45	M-12	30	0,323	500	10
	110044	75	55	M-12	30	0,373	450	11
	110045	80	30	M-14	35	0,341	950	7
	110046	80	40	M-14	35	0,395	600	9
	110047	80	50	M-14	35	0,415	550	10
110048	80	55	M-14	35	0,458	550	11	
110049	80	70	M-14	35	0,547	500	13	
110050	80	75	M-14	35	0,579	450	14	
110051	95	40	M-16	45	0,568	1200	8	
110052	95	55	M-16	45	0,689	1000	11	
110053	95	60	M-16	45	0,743	800	12	
110054	95	75	M-16	45	0,892	700	13	
SIMPLE BUFFERS AMC 105-150	110055	105	50	M-16	45	0,754	1200	9
	110056	105	75	M-16	45	1,262	1000	13
	110057	105	100	M-16	45	1,514	800	16
	110058	120	50	M-16	45	0,917	1500	9
	110059	120	75	M-16	45	1,252	1200	13
	110060	120	100	M-16	45	1,579	1000	16
	110062	130	50	M-16	45	1,257	1600	9
110063	130	75	M-16	45	1,647	1450	13	
110064	130	100	M-16	45	2,035	1200	16	
110065	150	50	M-20	50	1,678	1800	9	
110066	150	75	M-20	50	2,202	1650	13	
110067	150	100	M-20	50	2,774	1400	16	

SIMPLE BUFFERS

AMC

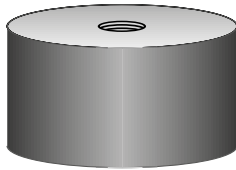
MECANOCAUCHO®

TYPE E

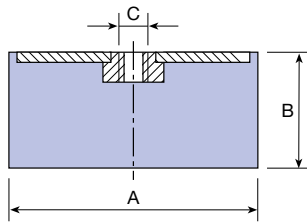
APPLICATIONS

As buffers: In any case for limiting a flexible element.

- End of stroke of spring or damper.
- End of stroke of cranes and hoists.
- Setting of fragile material in packings.



TYPE E



Type	Code	A (mm)	B (mm)	C (mm)	Weight (kg)	COMPRESSION LOAD Max. daN	COMPRESSION DEFLECT. mm
SIMPLE BUFFERS TYPE E 12-25	111001	12,5	10	M-5	0,004	12	2
	111002	12,5	15	M-5	0,004	10	3
	111003	12,5	20	M-5	0,004	8	3,5
	111004	16	10	M-5	0,005	20	1,5
	111005	16	15	M-5	0,006	20	3
	111006	16	20	M-5	0,007	15	4
	111007	16	25	M-5	0,008	15	5
	111008	20	8,5	M-6	0,008	40	1,5
	111009	20	15	M-6	0,008	35	4
	111010	20	20	M-6	0,011	30	5
	111011	20	25	M-6	0,012	30	5,5
	111012	20	30	M-6	0,015	25	7
	111091	25,5	10	M-6	0,015	80	2
	111092	25,5	15	M-6	0,016	60	3,5
	111093	25,5	20	M-6	0,021	55	4,5
	111094	25,5	25	M-6	0,023	50	6
	111095	25,5	30	M-6	0,026	50	8
	111013	25,5	10	M-8	0,017	80	2
	111014	25,5	15	M-8	0,019	60	3,5
111015	25,5	19	M-8	0,021	55	4,5	
111016	25,5	22	M-8	0,024	50	5,5	
111017	25,5	25	M-8	0,025	50	6	
111018	25,5	30	M-8	0,029	50	8	
111019	25,5	40	M-8	0,033	50	10	
SIMPLE BUFFERS TYPE E 30-50	111020	30	15	M-8	0,025	90	3
	111021	30	22	M-8	0,028	80	5
	111101	30	25	M-8	0,034	75	6,5
	111022	30	30	M-8	0,038	70	8
	111023	30	40	M-8	0,045	60	9
	111112	40	20	M-8	0,051	160	5
	111113	40	25	M-8	0,056	150	6
	111114	40	28	M-8	0,061	150	6
	111115	40	30	M-8	0,063	150	6
	111116	40	35	M-8	0,071	120	8
	111117	40	40	M-8	0,071	120	10
	111118	40	45	M-8	0,085	120	11
	111024	40	20	M-10	0,054	160	5
	111110	40	25	M-10	0,059	150	6
	111025	40	28	M-10	0,065	150	6
	111111	40	30	M-10	0,066	150	6
	111026	40	35	M-10	0,075	120	8
	111027	40	40	M-10	0,081	120	10
	111028	40	45	M-10	0,089	120	11
	111121	50	20	M-10	0,084	300	5
	111029	50	25	M-10	0,088	300	6
	111122	50	30	M-10	0,101	275	7
111030	50	35	M-10	0,111	250	8	
111123	50	40	M-10	0,124	210	10	
111031	50	45	M-10	0,134	190	11	
111124	50	50	M-10	0,151	170	11	
111032	50	60	M-10	0,166	150	11	
SIMPLE BUFFERS TYPE E 60-95	111033	60	25	M-10	0,138	400	6
	111034	60	36	M-10	0,171	300	9
	111035	60	45	M-10	0,197	250	11
	111036	60	60	M-10	0,246	200	12
	111037	70	35	M-10	0,225	450	8
	111038	70	50	M-10	0,287	350	11
	111039	70	60	M-10	0,327	300	12
	111040	70	70	M-10	0,396	300	14
	111041	75	25	M-12	0,201	650	7
	111042	75	40	M-12	0,277	500	9
	111043	75	45	M-12	0,3	500	10
	111044	75	55	M-12	0,348	450	11
	111045	80	30	M-14	0,283	950	7
	111046	80	40	M-14	0,335	600	9
	111047	80	50	M-14	0,382	550	10
	111048	80	55	M-14	0,411	550	11
	111049	80	70	M-14	0,495	500	13
	111050	80	75	M-14	0,515	450	14
	111051	95	40	M-16	0,521	1200	8
	111052	95	55	M-16	0,642	1000	11
111053	95	60	M-16	0,691	800	12	
111054	95	75	M-16	0,84	700	13	
SIMPLE BUFFERS TYPE E 105-150	111055	105	50	M-16	0,71	1200	9
	111056	105	75	M-16	0,956	1000	13
	111057	105	100	M-16	1,19	800	16
	111058	120	50	M-16	0,856	1500	9
	111059	120	75	M-16	1,203	1200	13
	111060	120	100	M-16	1,52	1000	16
	111062	130	50	M-16	1,19	1600	9
	111063	130	75	M-16	1,57	1450	13
	111064	130	100	M-16	1,958	1200	16
	111065	150	50	M-20	1,537	1800	9
	111066	150	75	M-20	2,557	1650	13
	111067	150	100	M-20	2,639	1400	16

STANDARD STAINLESS STEEL AMC MECANOCAUCHO® BOBBINS

OPERATION AND ASSEMBLY

Their elasticity is much greater in all the directions parallel to the armatures than in the perpendicular direction. The rubber works based on compression or shear depending on the direction it is placed in at installation time. This direction is made according to the use and the objective.

It is therefore installed with nuts or screws depending on the model chosen, with one part attached to the fixed chassis and the other to

the machine to be suspended.

APPLICATIONS

The AMC MECANOCAUCHO® bobbins are particularly suitable for installation on small motor-pumps, motor-ventilators, driers, sieves, compactors, washing machines, electrical motors, on-board control panels, measuring apparatuses, control cabinets, microphones, fluorescent tubes, etc.

Type	Code	A (mm)	B (mm)	C (mm)	H (mm)	Weight (kg)	COMPRESSION LOAD Max. daN	COMPRESSION DEFLECT. mm	SHEAR LOAD Max. daN	SHEAR DEFLECT. mm
BOBBINS TYPE A 12-25 STAINLESS STEEL	120301	20	20	M-6	18	0,019	30	5	5	3,5
	120302	20	25	M-6	18	-	30	5,5	4,5	4,5
	120303	25	25	M-6	18	-	55	4,5	8	3,5
	120304	25	30	M-6	18	-	50	8	8	6
	120305	30	20	M-8	23	0,055	80	5	11	4
	120306	30	30	M-8	23	-	70	8	11	6
	120307	40	30	M-8	23	0,092	150	6	30	5,5
	120308	40	40	M-10	28	0,131	120	10	20	7,5
	120309	50	25	M-10	28	-	300	6	25	4,5
	120310	50	35	M-10	28	-	250	8	25	7
	120311	50	45	M-10	28	-	190	11	25	9
	120312	60	35	M-10	28	-	300	9	30	7
	120313	60	45	M-10	28	0,255	250	11	30	9
	120314	60	60	M-10	28	0,304	200	12	30	10
	120315	70	45	M-12	37	0,376	350	11	35	11

Type	Code	A (mm)	B (mm)	C (mm)	Weight (kg)	COMPRESSION LOAD Max. daN	COMPRESSION DEFLECT. mm	SHEAR LOAD Max. daN	SHEAR DEFLECT. mm
BOBBINS TYPE C STAINLESS STEEL	120401	60	35	M-10	-	300	9	30	7
	120402	60	60	M-10	0,272	200	12	30	10
	120403	70	55	M-12	0,361	325	11,5	35	12
	120404	80	75	M-12	0,57	450	14	40	16
	120405	100	80	M-16	-	1000	13	80	14

AMC MECANOCAUCHO® DIABOLO MOUNTS

APPLICATIONS

The AMC MECANOCAUCHO® Diabolo mounts are particularly suitable for installation on small motor-pumps, motor-ventilators, driers, sieves, compactors, washing machines, electrical motors, on-board control panels, measuring apparatuses, control cabinets, micro-phones, fluorescent tubes, etc.

TYPE A		Type	A (mm)	B (mm)	D (mm)	H (mm)	COMPRESSION LOAD Max. daN	COMPRESSION DEFLECT. mm	SHEAR LOAD Max. daN	SHEAR DEFLECT. mm	Code	C (mm)	Weight (kg)
		F.000N	12	12	8	10	4	1,5	0,4	1,5	129001	M-5	0,006
F.00N	20	19	13,5	16,5	12	2,5	3	5	129002	M-6	0,017		
F.3	30	25	24	20	40	5	4	4,5	129003	M-8	0,08		
F.0N	40	28	19	25	30	5	2,5	4,5	129004	M-10	0,093		
F.9	40	30	26	25	45	3	4	4,5	129005	M-8	0,08		
F.7	44	42	25	25	50	6	9	6	129006	M-8	0,094		
F.1	60	44	24	20	40	5	7	5	129007	M-8	0,174		
F.2	60	44	34	20	75	5	12	6	129008	M-8	0,188		
F.2	60	44	34	25	75	5	12	6	129013	M-10	0,188		
F.4	60	60	50	25	150	8	30	10	129009	M-10	0,279		
F.8	60	36	37	25	100	7	20	8	129010	M-10	0,205		
F.5	80	70	70	35	300	9,5	55	9,8	129011	M-14	0,667		
F.6	95	76	80	45	400	9,5	70	8	129012	M-16	0,952		

TYPE B		Type	A (mm)	B (mm)	D (mm)	H (mm)	COMPRESSION LOAD Max. daN	COMPRESSION DEFLECT. mm	SHEAR LOAD Max. daN	SHEAR DEFLECT. mm	Code	C (mm)	Weight (kg)
		F.000N	12	12	8	10	4	1,5	0,4	1,5	129101	M-5	0,005
F.00N	20	19	13,5	16,5	12	2,5	3	5	129102	M-6	0,016		
F.3	30	25	24	20	40	5	4	4,5	129103	M-8	0,046		
F.0N	40	28	19	25	30	5	2,5	4,5	129104	M-10	0,084		
F.9	40	30	26	25	45	3	4	4,5	128006	M-8	0,072		
F.9	40	30	26	25	45	3	4	4,5	129105	M-8	0,074		
F.7	44	42	25	25	50	6	9	6	129106	M-8	0,09		
F.1	60	44	24	20	40	5	7	5	129107	M-8	0,167		
F.2	60	44	34	20	75	5	12	6	129108	M-8	0,183		
F.2	60	44	34	25	75	5	12	6	128010	M-10	-		
F.4	60	60	50	25	150	8	30	10	129109	M-10	0,271		
F.8	60	36	37	25	100	7	20	8	129110	M-10	0,202		
F.5	80	70	70	35	300	9,5	55	9,8	129111	M-14	0,616		
F.6	95	76	80	45	400	9,5	70	8	129112	M-16	0,94		

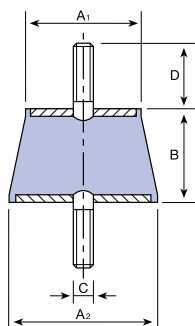
TYPE C		Type	A (mm)	B (mm)	D (mm)	COMPRESSION LOAD Max. daN	COMPRESSION DEFLECT. mm	SHEAR LOAD Max. daN	SHEAR DEFLECT. mm	Code	C (mm)	Weight (kg)
		F.00N	20	19	13,5	12	2,5	3	5	129202	M-6	0,015
F.3	30	25	24	40	5	4	4,5	129203	M-8	0,055		
F.0N	40	28	19	30	5	2,5	4,5	129204	M-10	0,074		
F.9	40	30	26	45	3	4	4,5	129213	M-8	0,058		
F.9	40	30	26	45	3	4	4,5	129205	M-8	0,069		
F.7	44	42	25	50	6	9	6	129206	M-8	0,082		
F.1	60	44	24	40	5	7	5	129207	M-8	0,164		
F.2	60	44	34	75	5	12	6	129208	M-8	0,174		
F.2	60	44	34	75	5	12	6	128002	M-10	0,198		
F.4	60	60	50	150	8	30	10	129209	M-10	0,257		
F.8	60	36	37	100	7	20	8	129210	M-10	0,187		
F.5	80	70	70	300	9,5	55	9,8	129211	M-14	0,551		
F.6	95	76	80	400	9,5	70	8	129212	M-16	0,897		

TRAPEZOIDAL MOUNTS AMC MECANOCAUCHO®

APPLICATIONS

Trapezoid mounts for ventilation boxes, small air-conditioning units, etc.

Type	B (mm.)	C	D (mm.)	A1	A2	Code	LOAD Kg. MIN	LOAD Kg. MAX
A-35-b	24	M8	24	30	40	131001	3	30
A-35	24	M8	24	30	40	131002	25	50
A-45-b	34	M8	24	40	50	131003	50	70
A-45	34	M8	24	40	50	131004	60	85
A-60	48	M12	Hembra	60	65	131005	85	150
A-130	72	M18	Hembra	130	140	131006	500	1.000

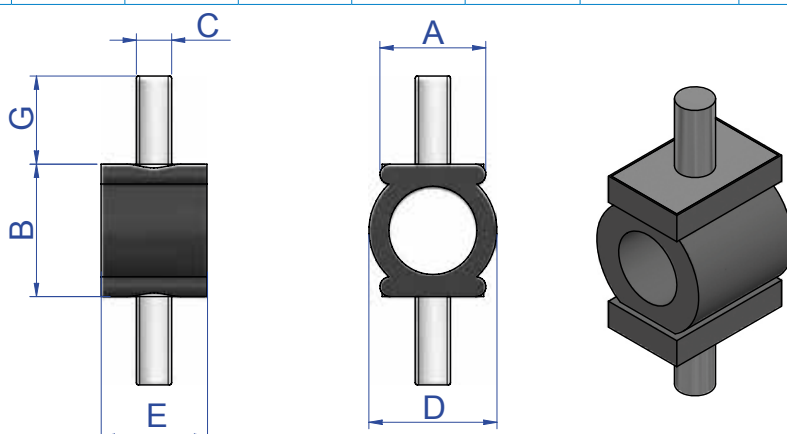


ANNULAR MOUNTS AMC MECANOCAUCHO®

APPLICATIONS

The AMC MECANOCAUCHO® Annular Mounts are comprised of a rubber ring joined by two metal parts with screws for fixation. Thanks to their design, these antivibration mounts may insulate low frequencies with low loads.

Type	A (mm.)	B (mm.)	C	D (mm.)	E (mm.)	G (mm.)	Code	Load (Kg.)	DEFLECTION mm.
832	9,5	18	M4	14	14	8	130011	0,5	1,5
828	9,5	18	M4	14	14	8	130003	1,25	1,5
829	9,5	18	M4	14	14	8	130001	2,5	1
830	24	30	M8	29	24	20	130004	3,5	6
831	24	30	M8	29	24	20	130002	8	6



PROGRESSIVE BUFFERS AMC MECANOCAUCHO®



APPLICATIONS

As buffers: In any case for limiting a flexible element.

- End of stroke of spring or damper.
- End of stroke of cranes and hoists.
- Setting of fragile material in packings.

TYPE A		Type	Code	A (mm.)	B (mm.)	C	H (mm.)	Load (Kg.)	Energy a 1 m/s Kg. M.	Dynamic Deflection mm.
		T-25	115001	25	19	M8	20	100	0,3	8
		T-30	115002	30	30	M6	16	140	0,6	15
		T-40	113025	35	40	M10	25	180	2	20
		T-50	115003	50	50	M8	20	340	3	25
		T-50	115004	50	64	M8	35	370	4	32
		T-50	115005	50	58	M8	20	400	3,7	28
		T-70	115006	72	58	M12	30	550	5	26

TYPE C		Type	Code	A (mm.)	B (mm.)	C	Load (Kg.)	Energy a 1 m/s Kg. M.	Dynamic Deflection mm.
		T-25	115008	25	19	M8	100	0,3	8
		T-30	115009	30	30	M6	140	0,6	15
		T-50	115010	50	50	M8	340	3	25
		T-50	115011	50	64	M8	370	4	32
		T-50	115012	50	58	M8	400	3,7	28
		T-70	115014	72	58	M12	550	5	26
		T-95	115015	95	80	M16	1100	12	37

TYPE A		Type	Code	A (mm.)	B (mm.)	C	H (mm.)	Load (Kg.)	Energy a 1 m/s Kg. M.	Dynamic Deflection mm.
		T-95	115007	95	80	M16	45	1100	12	37
		T - 85	116001	84	52	M12	35	1500	20	20
		T - 120	116002	120	75	M16	45	3000	34	22
T - 220	116003	220	137	M24	80	15000	250	40		

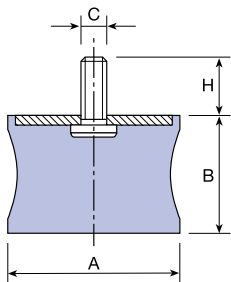
TYPE C		Type	Code	A (mm.)	B (mm.)	C	Load (Kg.)	Energy a 1 m/s Kg. M.	Dynamic Deflection mm.
		T - 85	116011	84	52	M12	1500	20	20
		T - 120	116012	120	75	M16	3000	34	22
T - 220	116013	220	137	M24	15000	250	40		

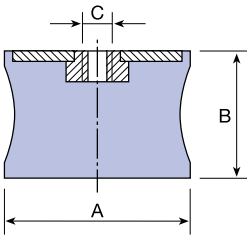
DIABOLO BUFFERS AMC MECANOCAUCHO®

APPLICATIONS

As buffers: In any case for limiting a flexible element.

- End of stroke of spring or damper.
- End of stroke of cranes and hoists.
- Setting of fragile material in packings.

TYPE A											
	Type	Code	A (mm)	B (mm)	C (mm)	H (mm)	Weight (kg)	Static Load max. daN	Dynamic Load max. daN	Dynamic Deflection mm	Static Deflection mm
	F.3	114001	30	23	M-8	20	0,032	40	90	9	5
	F.7	114002	44	42	M-8	20	0,07	50	100	10	6
	F.1	114003	60	44	M-8	20	0,116	40	100	10	4
	F.2	114004	60	44	M-8	20	0,127	75	200	12	5,5
	F.4	114005	60	60	M-10	25	0,213	150	350	15	8
	F.8	114006	60	31	M-10	25	0,135	100	275	14	7
	F.5	114007	80	65	M-14	35	0,508	300	800	16	9,5
	F.6	114008	95	70	M-16	45	0,724	400	1000	18	9,5

TYPE C											
	Type	Code	A (mm)	B (mm)	C (mm)	Weight (kg)	Static Load max. daN	Dynamic Load max. daN	Dynamic Deflection mm	Static Deflection mm	
	F.3	114011	30	23	M-8	0,036	40	90	9	5	
	F.7	114012	44	42	M-8	0,066	50	100	10	6	
	F.1	114013	60	44	M-8	0,098	40	100	10	4	
	F.2	114014	60	44	M-8	0,117	75	200	12	5,5	
	F.4	114015	60	60	M-10	0,204	150	350	15	8	
	F.8	114016	60	31	M-10	0,127	100	275	14	7	
	F.5	114017	80	65	M-14	0,445	300	800	16	9,5	
	F.6	114018	95	70	M-16	0,673	400	1000	18	9,5	

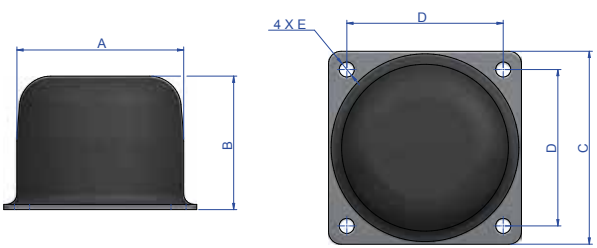
CYLINDRICAL BUFFERS AMC MECANOCAUCHO®

APPLICATIONS

As buffers: In any case for limiting a flexible element.

- End of stroke of spring or damper.
- End of stroke of cranes and hoists.
- Setting of fragile material in packings.



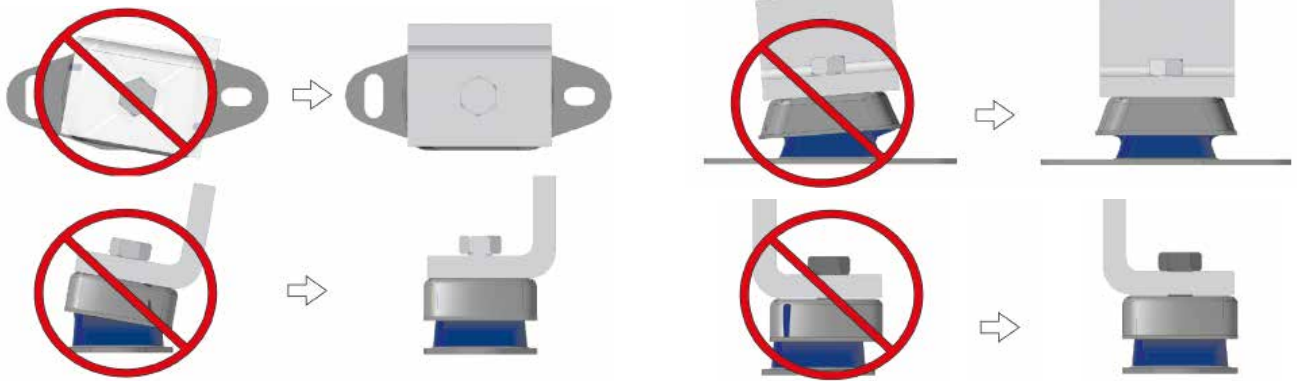
											
	Type	Code	A (mm)	B (mm)	C (mm)	D (mm)	E (mm)	Load (kg)	DEFLECTION mm	Weight (kg)	Energy (Nm)
	T - 150	117001	160	125	185	150	13,5	5000	50	4,172	1250
	T - 250	117002	250	208	315	250	14,5	40000	100	18	12500

INSTALLATION PRINCIPLES

RECOMMENDATIONS FOR HOOD MOUNTS

The hood mounts should be installed between two parallel and perfectly flat surfaces. Mounts operating tilted or twisted do not work properly. This may be due to incorrect alignment, tolerances in the building of the chassis or over-tightened torque during the installation of the Antivibration mounts.

This applies to our marine-type, BSB, BRB or Mecanodamp mounts.



RECOMMENDATIONS FOR THE CONICAL MOUNTS

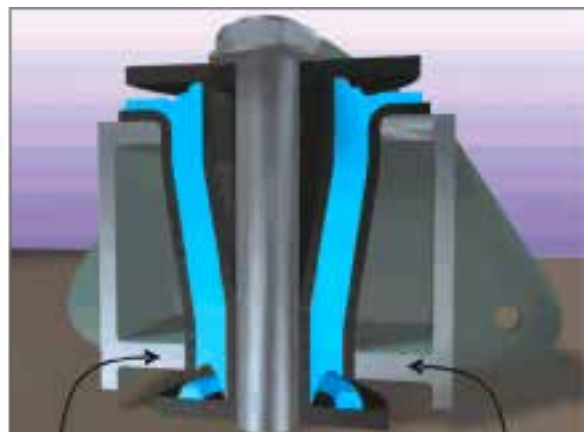
The conical mounts should always use the washers indicated for each model.

Similarly, we recommend the use of lateral limiters for cases with high loads or radial impact.

This applies to our AT, SCB, SCH or Mecanocaucho® mounts.



Anti-rebound washers



Radial load limiters

RECOMMENDATIONS FOR THE DSD AND DRD MOUNTS

Although it is not absolutely necessary, the AMC MECANOCAUCHO® hoods should be used in the DSD and DRD hoods. This hood distributes the load evenly in the event of overloads, and also provides protection from possible oil splashes.

Care should be taken to make sure that the protective hood has the same or a greater diameter than that of the diameter of the rubber element.

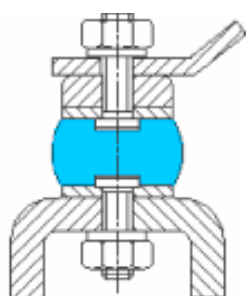
We have a standard range of Mecanocaucho® protection hoods. Check them out.



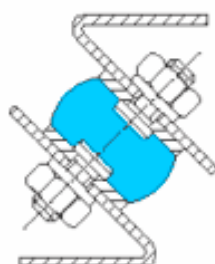
RECOMMENDATIONS FOR THE CYLINDRICAL MOUNTS

The cylindrical mounts should never work at traction. They should be used on a compression basis. To obtain greater deflection, use them at shear or shear /compression, although the maximum loads indicated in our catalogue for shear use should never be exceeded.

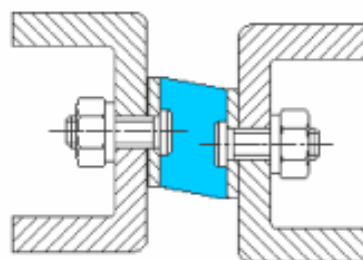
This applies to our bobbins, diabolos, trapezoidal or annular mounts.



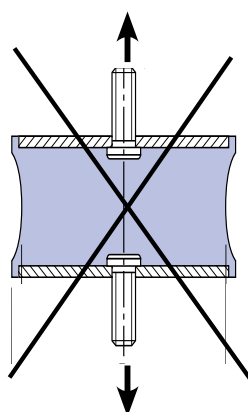
Compression



Compression-shear



Shear



RECOMMENDATIONS FOR MACHINES THAT REQUIRE ALIGNMENT

When an alignment is required between different mechanical elements of the machine, the creeping effect should be taken into account. The increased deformation produced by the creep of the elastomer leads to a "misalignment" between suspended and rigid elements, particularly during the first 48 hours of static load in the antivibration mounts.

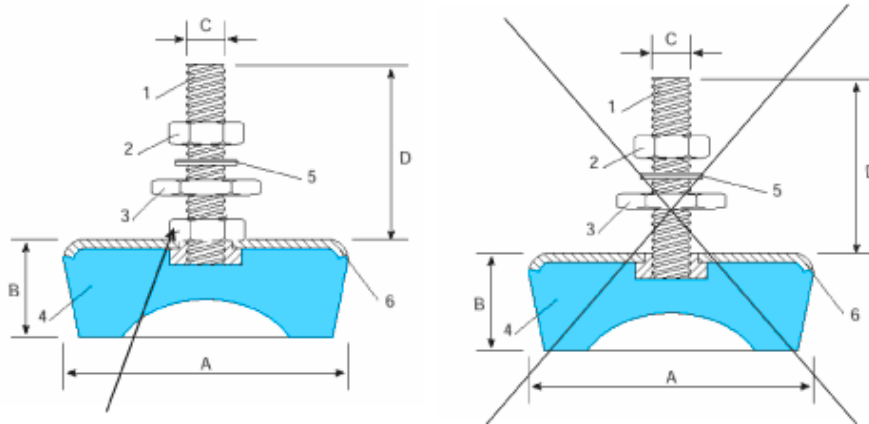
Alignment should therefore be checked 48 hours after the installation of the machine.

If this is not possible contact AMC's technical department and they will help you to ascertain the optimal alignment of your machine.

RECOMMENDATIONS FOR AMC MECANOCAUCHO® MACHINE MOUNTS WITHOUT ADJUSTABLE HOOD

On installing one of our AMC MECANOCAUCHO® machine mounts without adjustable hood, great care should be taken to ensure that the load of the machine does not rest on the screw, but on the hood.

This applies to our AMC MECANOCAUCHO® SV, SM and low SV series mounts.



This nut spreads the load on the bell and avoids tensioning the below welded insert.

RECOMMENDATIONS FOR TORQUE TIGHTENING FOR THE BRB, BSB, MD AND MARINE MOUNTS

Before installing, make sure that the support surfaces are sufficiently rigid flat and totally parallel. The main fixing screw should be tightened according to the torques recommended in the following chart:

	M8	M10	M12	M16	M20	M24
Tightening torque Nm	16	32	55	125	190	285

RECOMMENDATIONS FOR THE INSTALLATION OF ANTIVIBRATION MOUNTS

The position of the antivibration mounts determines the vibration modes of the suspended ensemble. An even load distribution over all the mounts is advisable. One easy way of obtaining this is by installing the antivibration mounts equidistant from the CDG of the ensemble.

Mounts installed at the height of the crankshaft provide more stable suspensions and avoid over-movement of the suspended ensemble, particularly in mobile or moving applications.

The external connections to the suspended ensemble, such as cables, exhaust, hydraulic pipes, etc., must be elastic enough to prevent vibrations from being transmitted to the chassis through them.

